

>>Safety precautions

The warning signs and illustrations shown in the instructions are for your safety and use the product correctly and prevent harm to you and others.

Warning signs, legends and their meanings are as follows:

Warning mark	Meaning
Danger	Danger of death or serious injury may occur in case of wrong use
Warning	Improper use may result in serious injury or death
Attention	Misuse may cause injury or damage to articles

Legend mark	
Danger	"Danger" means prohibited (something that is not allowed to be done). The prohibited contents are indicated by words or pictures below or near
Warning	The "danger" means forbidden (things that are not allowed to be done). The specific prohibited contents are expressed in words or pictures below or near.

Danger	
Do not use it with other medical electronic instruments at the same time, such as cardiac pacemaker, artificial heart and lung and other life sustaining medical electronic instruments, electrocardiograph and other medical electronic instruments, otherwise it will cause danger. If the patient uses high-frequency surgical equipment and massager at the same time, the massager may cause burns or damage the massager; If the massager is used near the short wave or microwave massage equipment (1m), the output of the massager may be unstable. Using electrodes close to the chest increases the risk of heart fibrillation.	
1. Do not use near the heart, head, mouth or pudenda, skin diseases and other parts. 2. It is prohibited for patients with skin perception disorder or those who are not sensitive to heat. 3. This product cannot be used in places with high heat, flammability, electromagnetic radiation and humidity. 4. It is forbidden to use when bathing, sweating and sleeping.	

==

>>Product Introduction

The cervical spine massager adopts a streamlined ring design that conforms to the physiological curvature of the human cervical spine. Traction trinity synchronized multi-channel massage to form a highly efficient composite energy field, which directly reaches the deep collective organization. In the whole massage process, the correct physiological posture is always maintained, which provides a scientific platform for correct massage of cervical fatigue. Let you relax, efficient and enjoyable multi-kinetic energy system massage at home, so that you can get more value-for-money enjoyment!

>>Product Features

Designed according to ergonomics, beautiful and scientific, in line with the neck curve;

Safe and reliable use.

The trinity of low-frequency electric pulse, magnetic effect, and circular traction forms an efficient composite energy field: using the latest 3D smart fitting technology, the electrodes can be easily adjusted according to your neck curve; A variety of automatic combination massage modes, a variety of massage strengths, can be selected according to different needs, suitable for a wider range of people;

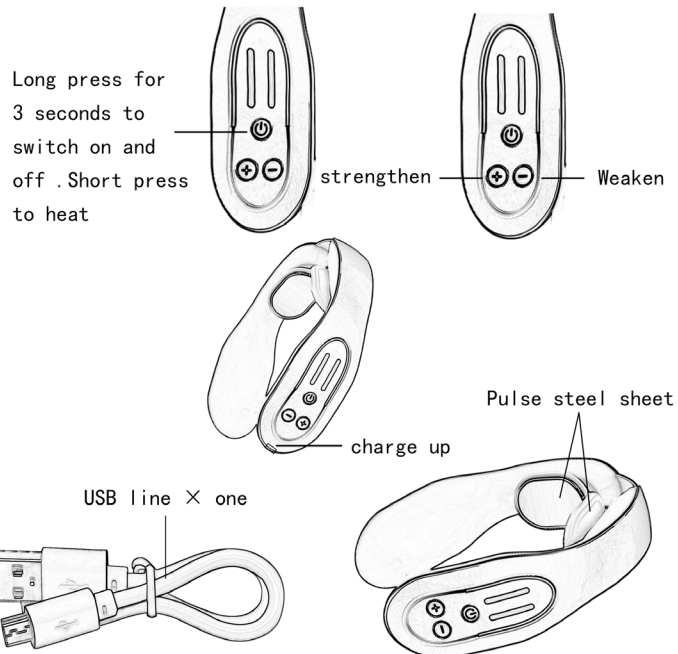
>>Product main structure

The massage instrument is mainly composed of the main body (ring type), conductive electrode sheet, magnet and battery. The main structure and components of the product are shown in the following figure:

Warning	
Pregnant women, women with menstrual period, sensitive skin, heart disease, abnormal blood pressure, malignant tumor, cerebrovascular patients, patients with acute diseases or other persons under medical treatment must consult a doctor before using this product. Do not use it for those who are electrically sensitive.	
Do not disassemble, repair or modify the massager without authorization, which will cause failure or electric shock.	
1. Do not move the massager during use. When changing the massage part, turn it off before use, otherwise there will be strong stimulation. 2. Do not give it to children or people without the ability to express consciousness. 3. If you feel unwell due to the use of this product, please stop using it immediately and consult a doctor. 4. Please turn off the power supply and the broadcast head when using or not using this product. 5. Do not use this product beyond the scope.	

<< Technical parameters and specifications

- Product specification
Product Name: cervical massage instrument
Model: K05
Executive standard: GB4706 1-2005 GB4706. 10-2008
Rated voltage: 5V
- Normal operating conditions
Ambient temperature: + 5 °C ~ + 40 °C; Relative temperature: ≤ 80%;
Atmospheric pressure: 86kpa ~ 106kpa;
- Electrical performance
Pulse frequency: 0hz-1000hz. Pulse width: 20us ~ 400ps.
Electric quantity of single pulse when the output amplitude is maximum: > 7uc.
Maximum output energy of single pulse: ≤ 300MJ.
Effective value of maximum output amplitude: < 50V (50mA)
Peak value of output voltage during open circuit measurement: ≤ 500V.



Method of operation

1、 Power supply mode

Built in 3.7V rechargeable battery.

2. Functional operation

Influence of open circuit and short circuit at the output end: it can withstand the influence of open circuit and short circuit at the output end, and its performance is not good. It has to be weakened.

Adjustment of output amplitude: continuous and uniform, and the minimum output is no more than 2% of the maximum output. Rated load impedance: 500Ω, tolerance + 10%; Surface magnetic field intensity: not less than 0.01T; Timing time of massage instrument: 15 minutes, tolerance + 10%.

QUALIFIED CERTIFICATE	
Product Name:	_____
Model / specification:	_____
Manufacturer:	_____
date of production:	_____

Warranty card	
Please keep it properly. The after-sales maintenance service rules of cervical massage instrument are as follows	
1 please read the product manual carefully before use and fill in the following form.	
2. Under normal use, you can enjoy free warranty within one year with this guarantee card. Human failure during the warranty period, We repair for free, but the cost of accessories and transportation shall be borne by the buyer.	
3. For the maintenance beyond the warranty period, we will repair it free of charge, but the accessories and transportation expenses shall be borne by the buyer.	
Product Name:	_____
model:	_____
Purchaser's name:	_____
Telephone:	_____
Address:	_____
Date of purchase:	_____
agent:	_____

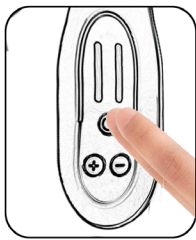
1. Long press the power button for 3 seconds to turn on the machine
2. Short press the power button to turn on the heating
3. Press the "+" key to adjust the pulse strength to increase
4. Press the "-" key to adjust the weakening of the pulse



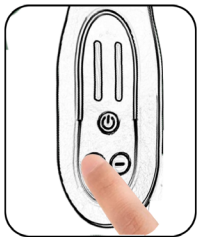
1. Wet the neck and bring the massage instrument



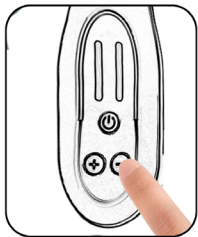
2. Long press the power button for 3 seconds to turn on



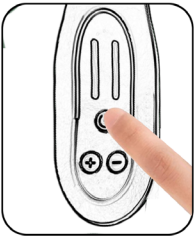
3. Short press the start button for heating



4. Press the + key to adjust the pulse strength enhancement



5. Press the - key to adjust the pulse intensity to weaken



6. Press and hold the start button for 3 seconds to shut down

3、Key introduction

<< Use faults and Solutions

Fault phenomenon	Inspection items	Resolvent
The product cannot be started	Whether the switch of massager host is on?	Turn on the switch of the massager host to turn the machine on.
	Is the battery low?	If the battery is low, please charge it.
It shows normal but no response or feeling	Does the electrode of the massage instrument directly contact the cervical skin?	The electrodes of the massage instrument must directly contact the cervical skin.
	Are there hair, clothes, accessories and other items at the contact between the electrode and the skin?	Please remove or separate items.
	Is the massage instrument electrode close to the neck skin?	Close the electrode to the skin, adjust the appropriate strength and massage mode, and wipe the neck skin with a wet towel.
	Is the massage time too long?	The suitable time is 10-20 minutes.
Tingling	Is the massage intensity too high?	Properly reduce the strength.
	Has the skin touched the electrode?	Check whether the skin has a history of allergy. For mild allergy, only shorten the massage time. For severe allergy, stop using it and take desensitization treatment first.
	Cold weather and dry skin?	Warm the skin and electrode surface with a wet towel.
The stimulus is weak	Is the neck skin close to the electrode?	Close to the skin and adjust the appropriate intensity and massage mode.
	Are there dirt or oil stains on the electrode?	Clean the electrode surface
	Is the battery low?	If the power is insufficient, please charge it

Mode switching, by pressing the "+, -" button on the button panel, you can switch twelve modes and strengths. The default setting of the machine is 0 gear, after pressing +, the velocity increase mode changes (different velocities match different Massage mode), the number of button indicators increases. After pressing -, the velocity weakening mode will change, and press the number of key indicator lights decreases, and different strengths match different massage modes. Long press the power button and then short press The heating can be turned on, and the heating is in level 1.

Reminder:
 This massage instrument does not include a charging head. The charging head of non fast charging mobile phone can be charged (It is recommended to use 1A mobile phone charging head)

Environmental information:

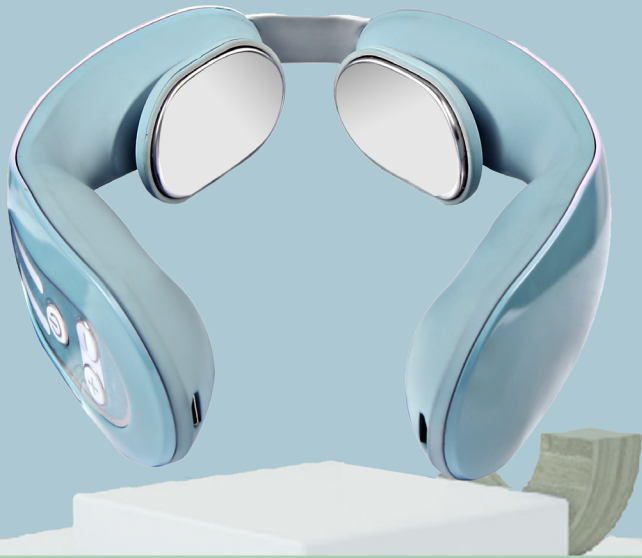
The built-in rechargeable battery contains substances that may pollute the environment. Before discarding the neck massage instrument, be sure to remove the battery, or send the neck massage instrument to the official designated recycling bin to dispose of the battery. The discarded neck massage instrument can also be sent to the designated maintenance department, which will decompose and recycle the battery.

To remove the battery:

Turn off the power and let the cervical massager run until the power runs out. Pry open the casing of the cervical spine massager And remove all the screws, disassemble the cervical spine massager and take out the battery. Only after discarding the cervical spine massager Only remove the rechargeable battery.

NECK MASSAGER

NECK MASSAGE, CARE WITH HEART



Please read the instruction manual carefully before use

<< About charging:

The instrument is equipped with protection function during charging. Do not use it during charging! The indicator flashes when charging, The full charge indicator is always on! Please use a 5V / 1A charger. Please stay away from sofa, bed and carpet when charging. And other furniture and wood products, cotton fabrics, paper products and other combustibles and inflammables and explosives.

The battery must be removed from the appliance before disposing of the appliance. When removing the battery, the appliance must To power off. Batteries should be disposed of safely.

<< Reminder:

This product shall not be disposed of together with domestic waste, but shall be collected in appropriate institutions for recycling collection and circulation selection The lithium ion battery used in this product is a valuable resource that can be recycled. When it is discarded after use, the product shall be handed over to professional personnel to take out the lithium-ion battery and the batteries are recycled and treated by professional institutions

Notes on battery life and replacement

1. The 3.7V rechargeable battery of the massage instrument can be used for about 2 years
2. This product uses the Android USB interface of 5v1a for charging
3. The indicator light is on for a long time when charging and off when full
4. The charging time is about 1-2 hours. Do not use it during charging

<< Preservation

1. Please keep it out of reach of children.
2. Do not store in direct sunlight, high temperature and humidity
3. Please keep it in a dry and ventilated place.
4. Do not disassemble, repair or modify this product without permission, as it may cause accidents or malfunctions.